

CONTAINERS

are everywhere, well almost



Containers are an excellent solution when you need fast, low cost and reliable storage space or when shipping project and relief cargoes with a storage need at destination.

Contact TITAN for to discuss how we can help you

TITAN
CONTAINERS



PLANNED OR EMERGENCY SUPPLY!

TITAN maintain "ready to go stocks" of cargoworthy 20' & 40' standard containers in almost all major locations and many others as well. We also arrange global 1-way use of new and used containers to meet our customer's requirements ensuring supply even in the most difficult parts of the world.



TITAN CONTAINER

TITAN Containers are ready when you require containers for storage or shipping

With more than 20 years experience in the container market TITAN have an expertise and network second to none. Regular and 1-off customers receive the same professional service and assistance in deciding the right type and quality of containers to suit their specific demands and applications.

Container sales

We offer a wide range of new and used container types for sale ex stock or delivered where required.

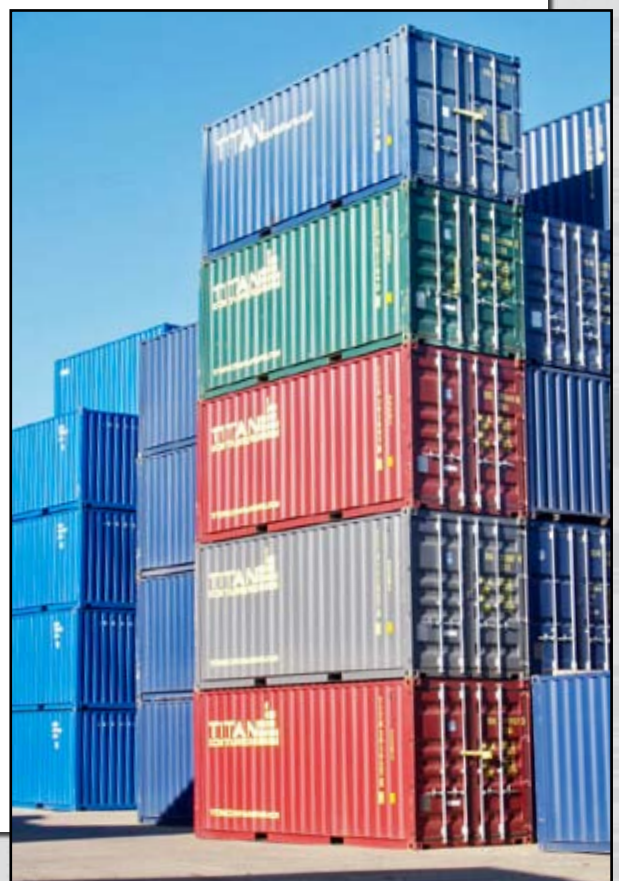
At TITAN you can purchase a single container delivered to your address or 100's of containers for collection from one or more of our depots and everything in between.

Prefer to rent?

A similar range of containers is also available on rental basis both domestically and internationally, as storage containers or for transport.

In many countries dedicated rental fleets (with user-friendly accessories) are operated where containers include special features to meet the local market & customer requirements.

Local or international rental can be a cost effective alternative to purchasing containers. Ask TITAN where you think this might be an option.



TITAN OFFICES

The head office is located in Copenhagen, Denmark with sales and operations offices in Constanta, Romania - London, UK - Oosterhout, Holland and Stockholm, Sweden.

Contact details:

	Tel	Fax	Email
Denmark			
Holland			
Romania			
Sweden			
UK & Ireland			

Pour de renseignements en Francais, s'il vous plait contacter - Por solicitaciones en Espanol, por favor contactar TITAN Romania

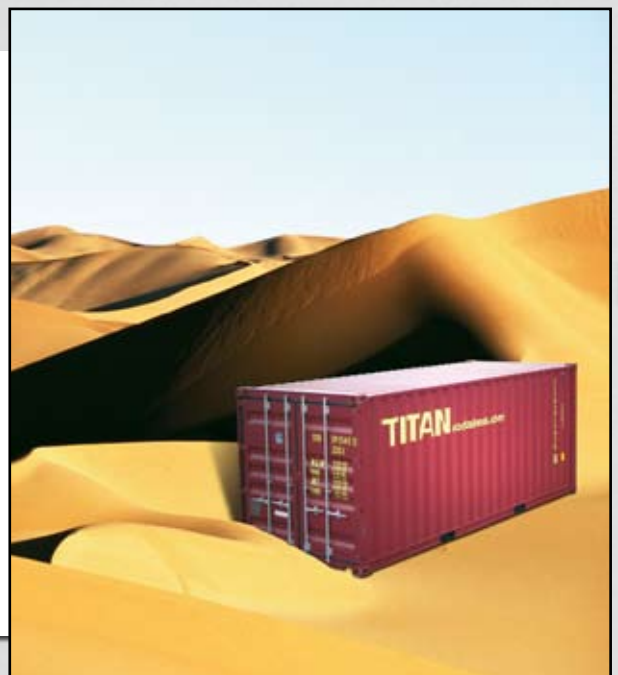
All offices offer local and English language staff.



TITAN COMPANIES

With an annual turnover in excess of €25 million the TITAN group is one of the largest privately owned corporations involved in container supply business.

TITAN Containers International A/S
TITAN Container Udlejning A/S
TITAN Containers BV
TITAN Containers Romania SRL
TITAN Containers (UK) Ltd
TITAN Sales & Management Holding ApS
T-TAINER AB



OUR PLANET HAS ONLY 1 ENVIRONMENT

TITAN believes in protecting the environment whenever economically possible and technically feasible.

For several years we have reduced our use of non-sustainable rain forests for container floors. Almost all our new rental containers over the past 3 years have been built using Bamboo flooring and where possible we ask for the same floor material in new sales containers. Unfortunately many customers still insist on hardwood plywood floors but we are making progress.

We are in close contact with paint manufacturers and have already commenced using water based paint systems where we realistically can.

The continued use of older containers, those considered no longer suitable by shipping lines and international leasing companies, for storage and export shipping after repair saves the environment for massive CO2 emissions, demands on energy and natural resource reserves.

TITAN started replacing R12 with Freon free refrigerants already in 1994 and since 2005 we have introduced new technology refrigerated machinery with the added advantage of greatly reduced power consumption.

We believe in the shortest possible transport of empty containers. This offers financial benefit to our customers together with environmental savings.



NEW STANDARD CONTAINERS

Our new containers are manufactured in accordance with all ISO regulations. Corten steel is used which together with a well-respected paint system (normally Hempels) guarantees a good protection against corrosion for many years. When used for storage new containers will last for many years. Realistically 20-30 years and probably longer!

20' and 40' containers are normally available in standard height (8'6") and as hi-cube (9'6").

TITAN's containers are manufactured in a wide range of attractive and practical colours. We can also arrange supply in customers own house colours when requested. Sales containers do not normally feature the TITAN logo.

New 20'/40' containers are supplied after one-way use by shipping lines from China. As all containers are handled many times between the factories and destinations some minor damages are always possible.

USED STANDARD CONTAINERS

“Original” container owners sell their containers for a variety of reasons but normally these are all related to the economy of continuing with the containers in the owners core business.

Containers in cosmetically good condition still offer many years use for storage purposes whilst those containers in poorer condition are often best being used for export project shipments and such like.

40' containers are available in as both standard and hi-cube whilst 20's are only available in standard height.

8'/10' containers are generally not available as used containers.

INSULATED CONTAINERS

Insulated containers have many advantages and are extremely flexible especially in areas with extreme climates.

As an ISO container shipping is the same as standard containers though with a slightly lower cubic capacity. With local installation of heaters or air-con insulated containers can be heated or cooled as required and used for a multitude of purposes.

As there are very few used insulated containers available (ex-refrigerated containers) TITAN build new insulated standards with normal plywood floors and new reefer containers with aluminium floors (without machinery) to meet customer needs.



EXTRA DOORS



Full Side Access

TITAN offers containers that open either in one or both sides plus 1 end. These are full ISO approved containers with maximum gross weight 24 tons. You can open 1, 2, 3 or all 4-side doors. When closed the containers are wind and watertight.

Further they are available in standard height (8'6") and as hi-cube (9'6"). The floor height is the same for all units and as the doors open 2700 containers can be placed side-by-side or end-to-end. This type is only available as 20'.

There are many applications for this type not least is when storing large items or many different items where access from the side eases access to the goods. This type is also often used as a temporary sales outlet.

These containers are heavier than standard containers and have a stronger/higher floor construction to avoid stress and deflection under load when side doors are open.

These types are generally only available as new containers

Double door

These are standard ISO containers with normal container doors located in both ends of the container.

Available as 20' and 40' these containers are rated as per standard 20'/40' containers. 40' model includes gooseneck tunnel.

This type is well suited to the installation of plant and machinery where access is required from both ends. They have also been used as tunnels & bridges, as baggage X-ray facilities, for site storage where boxes are divided into 2 separate units. Not available in used condition.



REEFER CONTAINERS

After almost 20 years sale and rental experience with reefers we are also very experienced with this type of container.

Rental

For rental purposes we use today predominantly newer containers with Thermo King Magnum machinery. This type of machine has been retrofitted to a substantial number of refurbished and modified reefer containers suited for supermarket use.

Apart from increased reliability there is also a real cost saving for customers as new technology machines use significantly less power than older machines. There is also a real benefit for the environment.



Modifications

As mentioned above TITAN has a wealth of experience modifying reefer containers to special applications. These include containers adapted to supermarket use and which comply with health & safety regulations, with separate frost and chill compartments, 10' reefers, as climate containers for product trials, laboratories and several other applications.



REEFER CONTAINERS

Power

Standard container machines require 380V/3 phase power. If you require back up (generator) power we strongly recommend the use of locally purchased petrol/diesel generators.



Noise emmissions

All reefer machines create an unacceptable noise level for night operation close to residential properties. To counter this we have designed acoustic chambers that fit to the container and reduce noise emissions to an acceptable level. These chambers include blazer fans to remove excess heat from the machinery.



Service and Repair

All machinery suppliers offer a close to worldwide service and repair facilities. TITAN can assist with spare part kits if required.



OTHER TYPES

Open top

Suited for loading awkward cargo best loaded through the roof.

20' and 40' open tops are mostly available as used containers. However, TITAN also operates a limited fleet of newer containers.

To meet the demand for this type for project shipments there are a large number of "converted" open tops in the market. These are typically standard containers that have been converted into open tops. Some of these are fully approved with normal loading capacity whilst others have reduced rating/capacity.



Flat rack and platform

With 2 ends and a base flat racks offer maximum flexibility when loading from the side or above.

Some flat racks have fixed ends whilst most have collapsible end walls reducing empty transport costs.

On more modern designs the end wall becomes part of the base creating a platform.



Modified containers

Containers can be modified to suit customer requirements and specifications. The most common modifications include: office containers, as workshops, as technique rooms.

TITAN perform some modifications at our depot facilities whilst more specialized conversions are most often performed under the direct control of customers.

ACCESSORIES

Extra security

All containers can be locked using a padlock through the seal eyes on the doors. However, there are various alternative-locking systems available for use on containers where extra security is required.

Locking Bars – in some countries this is the preferred solution. The padlock is protected and some locking bars are made from hardened steel.

Fix Lock – when fitted the door handle cannot be moved and doors remain locked.

Lock Box – Welded to the container this housing protects the padlock.



Ramps

As storage containers are normally placed on the ground we offer a wide range of ramps suited for small fork trucks and pallet movers.



Support legs

Used when containers are to be placed at loading bays and such like.

Twistlocks

When stacking containers it is best to lock the containers at each corner. Interlocking twist locks are a fast, effective and inexpensive solution.



Electrical Fittings

If you require lighting in the container we can supply various options to suit your needs. Similarly heater panels can be supplied for use in insulated containers.

Many of our options include the use of powerful magnets giving super flexibility, reduced costs and very important no screw holes in the containers!




Shelving

We offer a range of shelving systems to suit your requirements.



DIMENSIONS

Container types	Internal dimensions in mm					
		Length	Width	Height	Height HC	
Standard	8'	2227	2088/1888	2058		2 + 1
	10'	2830	2340	2390	2695	3 + 2
	20'	5898	2352	2393	2698	7 + 4
	40'	12032	2352	2393	2698	15 + 10
Flexibox (Insulated standard)	10'	2730	2240	2300		3 + 2
	20'	5794	2248	2341		7 + 4
	40'	11750	2254	2220	2520	14 + 9
Insulated	10'	2720	2254	2220/2090		3 + 2
	20'	5750	2254	2245/2090		7 + 4
	40'	11750	2254	2220	2520	14 + 9
Side Access	20'	5898	2288	2254	2559	7 + 4
Doors in both ends	20'	5844	2352	2393		7 + 4
	40'	11982	2352	2393		14 + 9
Refrigerated containers	10'	2683	2260	2245		3 + 2
	20'	5750	2260	2245	2540	7 + 4
	40'	11750	2254	2220	2520	14 + 9
With butchers door	20'	5450	2260	2245	2540	6 + 4
	40'	11450	2254	2220	2520	14 + 9
Open Top	20'	5888	2350	2396		7 + 4
	40'	11980	2350	2396		14 + 9
Flat Rack	20'	5950				
	40'	11800				

Side Access

All dimensions are typical dimensions for the container type – small deviations are always possible.

EURO PALLETS and CAGES – 1200 x 800mm

The EURO dimensions were determined without consideration of standard ISO dimensions for containers. Therefore it is not possible to use 100% of the cubic capacity of normal shipping containers. EURO pallets should be placed as shown on the picture.

We have a limited supply of palletwide 40' containers but not all of these are permitted on large cellular container ships due the external width.



SAVE TIME, SAVE MONEY

RENTING OR BUYING THERE IS OFTEN MONEY TO BE SAVED!

Lead-time is a key issue. The more time we have the more likely it becomes that we can use our industry and logistic skills to reduce the total cost of the container(s) by reducing transport costs.

Information on what you really want to achieve with the container(s) allows TITAN to use our industry knowledge to recommend that which we consider the best solution to your needs. The best solution should also offer the best economy.

Think long term and not just here and now. If you really want the best value for money when buying a container then starting with a new container will be the best investment. Whilst capital outlay will be higher the residual value will depreciate much slower than a used container and the useful working life without maintenance and repair will be much longer.

TITAN offers new (and used) containers in many different colours to reduce the need to repaint.

Avoid extra transport charges. Please be ready to receive the container(s) as agreed

Container rental for local storage or 1-way shipping use is often less expensive than many expect. Supply and return can be local or worldwide!



CONTAINERS

CAN BE USED EVERYWHERE, WELL ALMOST



TITAN supplies high quality containers and service with competitive pricing.
Why be satisfied with less?

TITAN Container Udlejning A/S | TITAN Containers International A/S
Litauen Alle 9 · 2630 Taastrup | Tlf.: 70 23 17 18 | Fax.: 70 23 16 17
E-mail: dk@titancontainer.com | www.titancontainer.com

TITAN
CONTAINERS